

Manageable and cost-effective color  
print solutions for your business.

SAMSUNG



Samsung Color Laser Copier MFP  
MultiXpress CLX-8540ND

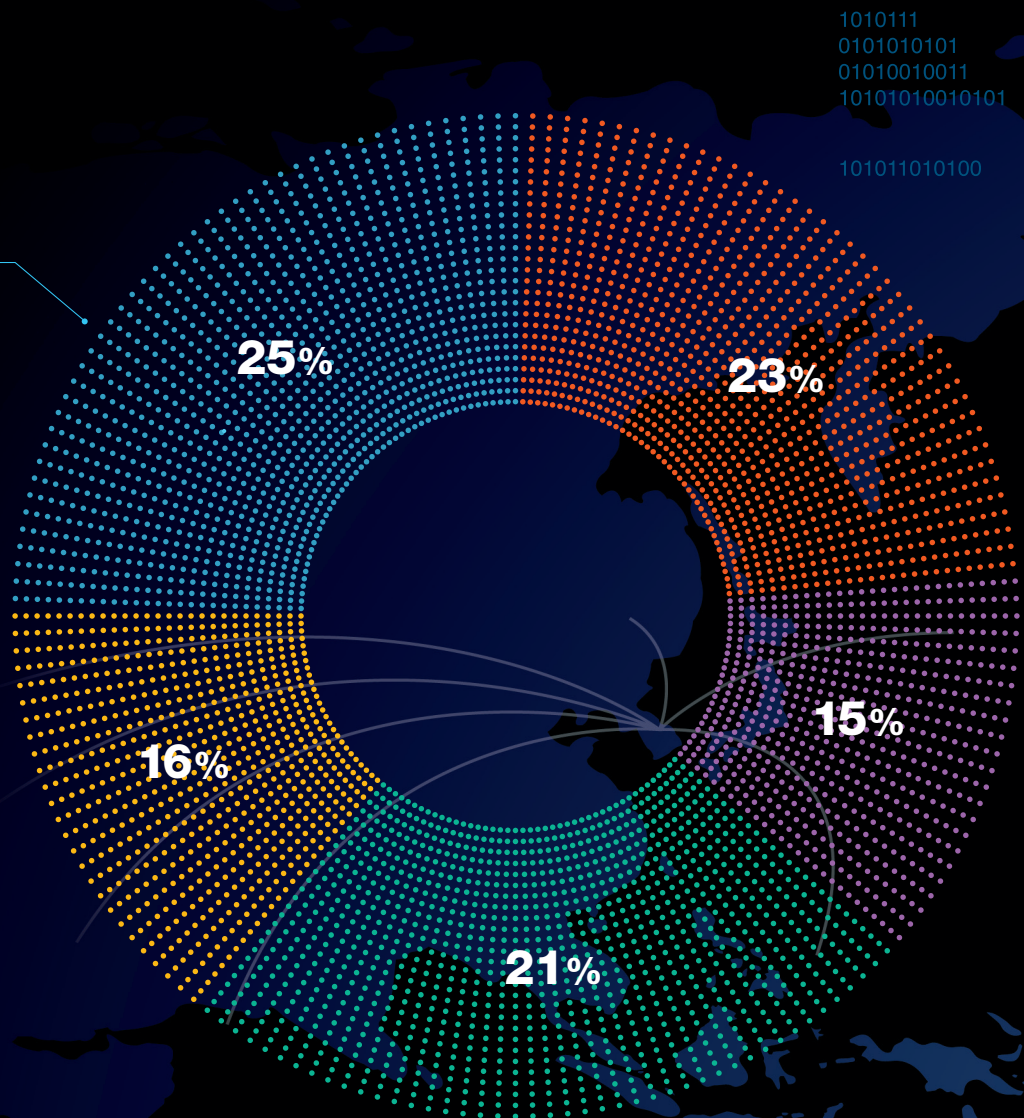
# Why Samsung?

Why should you trust your company to Samsung? Samsung is a world-renowned global company that regularly wins awards for reliability, design and innovative technology. We create a wide range of technologies and products, and are experts in digital media convergence across applications, devices and networks. In the printing industry, Samsung is the fastest-growing company, topping competitor sales for many models in its class.

Samsung has earned its reputation with award-winning excellence in performance and design innovation, and by providing businesses with leading network and security solutions. Samsung products are well known for their reliability and deliver a high monthly duty cycle, maximizing uptime and keeping business productivity high. Samsung printers are also designed for high toner yield, producing more high-quality, fade-resistant and long-lasting prints per cartridge.

**SALES REVENUE BY DIVISION**  
(AT THE END OF 2007)

- Digital Media (Includes Printer/MFP)
- Telecommunication Networks
- Digital Appliance / Others
- Semiconductor
- LCD



## About Samsung Electronics Co. Ltd.

Samsung Electronics Co., Ltd. is a global leader in semiconductor, telecommunication, digital media and digital convergence technologies with 2008 consolidated sales of \$96 billion. Employing approximately 164,600 people in 179 offices across 61 countries, the company consists of two business units: Digital Media & Communications, and Device Solutions. Recognized as one of the fastest growing global brands, Samsung Electronics is a leading producer of digital TVs, memory chips, mobile phones, TFT-LCDs, printers and MFPs. For more information, please visit [www.samsung.com](http://www.samsung.com).



# Committed to keeping the Earth green.

Samsung's innovative thinking isn't restricted simply to advancements in performance. We also apply our thinking to the challenge of keeping our world green. The result has been technology and programs that significantly reduce technology's impact on our world.



**EnviroSync:** This Samsung product trade-in program offers businesses an environmentally friendly way to dispose of obsolete and old peripherals.



**Samsung Recycling Direct™:** Samsung's global product recycling program has enabled consumers to recycle more than two million pounds of e-waste in the U.S. alone.



**Planet-Friendly Technology:** Along with products that consume less energy, Samsung also strives for innovative ways to reduce hazardous materials in products to reduce manufacturing waste and aid recyclability. Even product size is addressed, to reduce shipping requirements and energy use.

01010010  
101011010100  
1010111  
0101010101  
01010010011  
10101010010101  
0010010  
1010101010  
011101010  
10010

01001  
1010110100  
1010111  
0101010101  
1010  
01001010010  
0101001  
0010100111  
0010101

01000

01000010  
10000  
1010111  
010100110101  
01010011  
1010101001010  
0010010  
1010101010  
1111010  
10010

## Why MultiXpress?

Samsung's latest Legal Color Copier MFP, the MultiXpress CLX-8540ND, has raised the industrial standard to a greater height. It outperforms other Digital MFPs, it includes many advanced features, and of course, it delivers Samsung's proven reliability.

The MultiXpress CLX-8540ND is the fastest Legal Color Copier MFP on the market today. Its state-of-the-art design, high-quality color output, and innovative features, outshine other Digital MFPs in its class!

The embedded administrative and accounting solutions make the MultiXpress CLX-8540ND the best choice for today's agile business printing environment!

  
**s.t.a.r.program**

Samsung's S.T.A.R. Program: The Samsung Takeback and Recycling Program is a free toner recycling service, and is a joint effort between Samsung and FedEx. Every returned empty cartridge is safely and responsibly recycled; they are never incinerated or sent to landfills.



**Eco-Friendly Manufacturing:** By 2010, Samsung will have reduced greenhouse gas emissions from its operations by 45 percent from 2001 levels.

**45%**  
Fewer Emissions



  
**s.t.a.r.program**

# Increase productivity with Xpress speeds.

The CLX-8540ND. One of the fastest color Digital MFPs in the marketplace today.

The Samsung MultiXpress CLX-8540ND is the cost-effective way to bring versatile color printing/copying to any office. Its speed, range of productivity-enhancing features and low total cost of ownership mean efficient printing without compromising quality. Combined with Samsung durability, the MultiXpress CLX-8540ND is designed to be one of the most economical and productive color laser MFPs not only on the market, but also in your office.

Outstanding performance for the most demanding environments.

## Fastest in Its Class

Printing 40 pages a minute makes the MultiXpress CLX-8540ND one of the world's fastest color Digital MFPs. With a scanning performance of 33 ipm, the MultiXpress CLX-8540ND offers a fast and efficient solution.



## Heavy-Duty System Components

With an 800MHz CPU, 1GB of RAM and a generous 160GB hard drive, the MultiXpress CLX-8540ND makes print and scan jobs easy to process, store and handle. The added features and processing power mean it's suitable for the most demanding office environments.

## Network-Ready, and Ready to Scan Print and Fax (Optional)

You can print, scan and even fax (optional) through your IT network in minutes, without slowing you down. And with one highly capable device taking care of the needs of even large workgroups and departments, the only thing you'll notice is productivity increasing.



Color technology that will make every business more professional.

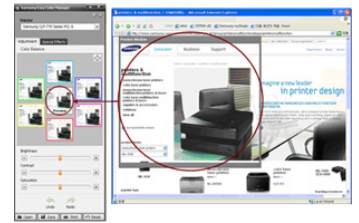
Improved color technology delivers color adjustments and uniformity for versatile and high quality document output.

## Samsung Easy Color Manager



Easy Color Manager allows you to easily adjust color balance, brightness, contrast and saturation of any image viewed on your monitor. It can be especially useful if you have specific color preferences, or if your company has its own brand requirements.

- You can get an image from anywhere on your screen.
- You can extend or reduce the size of the preview window.
- You can adjust the color tone of the image you grabbed.
- You can save your toner or paper by selecting the precise area to print.



## Auto Color Detection



The MultiXpress CLX-8540ND provides users with an Auto option. Users no longer have to rely on manually differentiating between mono and color prints. Users can skip the time-consuming process of separating mono and color documents, while saving money by avoiding the cost of unnecessary color prints.

## Samsung's Real-Time Calibration Technology



Real-Time Calibration Technology ensures documents are printed to a consistently high color quality. When printing especially important documents, users can still choose to manually define the color quality of their documents.

## Consistent Color Printing



The MultiXpress CLX-8540ND handles the demands of premium-quality 9,600 dpi with ease. The Easy Color Manager and enhanced CTD sensor ensures color output is always clear, sharp and professional.

# Technology you can rely on.

Maintain efficiency with Xpress reliability.

Samsung's MultiXpress CLX-8540ND ensures a reliable and efficient print environment for your office. It offers all the functionality that businesses expect – color printing, digital copying, scanning and faxing – while increasing productivity with its reliable performance, high quality output and simple maintenance.

## Economical and compact for your versatile business environment.



### Power Saver

The economical Power Saver mode consumes 80% less power than Ready mode. To save even more energy, you can set a timer to automatically activate Power Saver mode. In regular use, the MultiXpress CLX-8540ND uses 20% less energy than an average Digital MFP, making it much more economical and cost-effective.

### Less Space

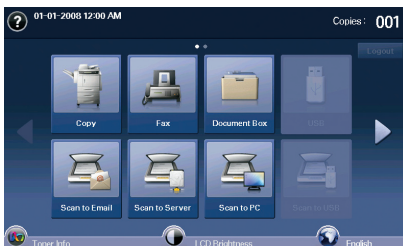
Office space is also a big issue. In general, an A3 digital MFP occupies more office space. Typically, the footprint of a mono A3 capable device is much larger than that of a letter device. MultiXpress CLX-8540ND's economical design occupies up to 75% less space in your office than general A3 Digital MFPs, so you have more room around you.



## Easy to manage and maintain.

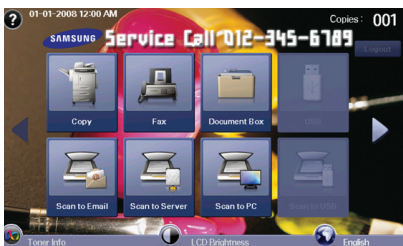
### Easy to Manage

Samsung's exclusive 7" color LCD touch screen and 3-dimensional UI design is simple and intuitive. The screen provides easy troubleshooting capabilities, resulting in minimum downtime.



### Customizable User Interface (HWCi)

You can customize the LCD panel with your corporate logo, IT Support number and service/support details.



### Smooth Network Integration

Advanced support for a wide range of network protocols makes the MultiXpress CLX-8540ND simple to integrate into your IT infrastructure (IPv6, 1GB N/W supported).

### Remote Management

Using Samsung's SyncThru™ Admin 5 online administration application, your machine can be easily managed and controlled in accordance with existing IT infrastructure policies.

### Paper Handling

Adding optional paper trays can allow storage of up to 2,720 sheets of paper at a time, so you don't have to refill as often. And the 2-bin finisher and 4-bin mailbox support 1000-sheet output, making it much more efficient in a challenging office environment.

### Modular System

The modular design makes consumables and accessory replacement effortless. For example, finisher accessories can be added by simply inserting them into the main device.



### Minimized Misfeeds and Paper Jams

The MultiXpress CLX-8540ND uses a center-loading method with a retard roller. If more than one sheet of paper is ever picked up, the retard roller rotates in the opposite direction, placing the extra paper back in its tray. This minimizes not only misfeeds, but also paper jams.



# The professional solution center.

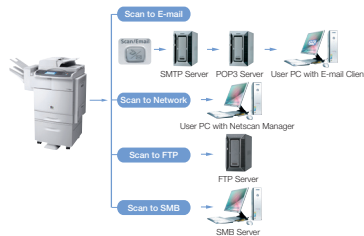
Complete control with Xpress customization.

Professional color copies provide an effective advantage for your business. Customizable controls for your high-speed color printing and copying can increase productivity and maintain economic operating costs.

## The most powerful solution center.

### Scan to Anywhere

The MultiXpress CLX-8540ND scans directly to email, FTP, SMB or the client. It's a direct way to connect and distribute documents efficiently.



### Document Box

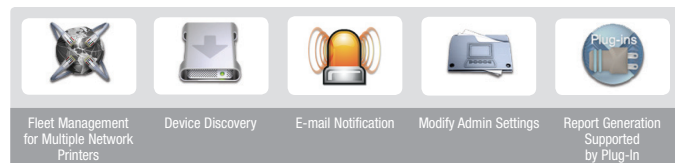
The MultiXpress CLX-8540ND includes a 160GB hard drive, giving it the capability of a Document Box function. Scanned information can be stored and managed. Data can then be printed, faxed, emailed or uploaded onto an FTP/SMB server directly from the printer.

### Standard Accounting

Standard Accounting allows the administrator to manage print usage for individual users. This function provides greater security and can help with restricting consumable usage by easy ID/PW-based locking.

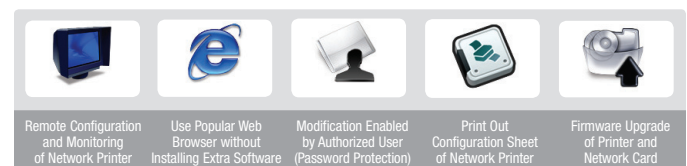
### SyncThru™ Admin 5

SyncThru™ Admin 5 service allows IT managers to easily manage and monitor all digital print devices on the network. Modifying settings can provide you time- and cost-savings.



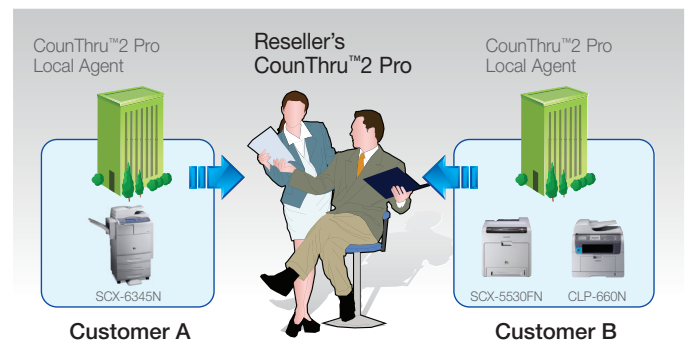
### SyncThru™ Web Service

SyncThru™ Web Service is easily and remotely accessible through a web browser and provides administrators with the ability to change network and individual printer settings, upgrade firmware and view network printer/MFP status.



### CounThru™ 2 Pro/Enterprise

CounThru™ is a server solution for Samsung Managed Print Services that offers visibility of networked devices for remote monitoring and management. It can also be used as a tool for accurate usage and billing information. CounThru™ supports a wide variety of network printers and MFPs, so you can use this single tool to track them all.



## Enhanced security to protect your valuable data.



The new MultiXpress CLX-8540ND helps protect valuable customer data, giving you peace of mind that your information is secure. Security benefits include:

### Enhanced Network Security Features:

- IPV6
- IPSEC
- SNMPv3
- HTTPs
- SMTPs
- LDAPs
- Kerberos
- 802.1x

### Enhanced Data Security Features:

- Data Encryption
- Hard Disk Wiping
- Confidential Print
- Machine Lockout
- Secure User Authentication
- Operational Panel Lock

### Advanced Management Features:

- Web Administration
- System Audit
- System Audit (Monitors all users' print/copy/scan/fax logs)
- Port Management and Control
- IP Address Filtering
- MAC Address Filtering

## Configurations



Main Unit (520 sheets + MP 100 sheets) +

### Options

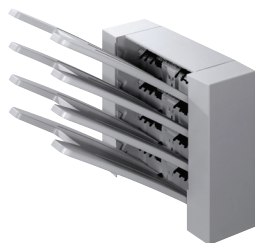
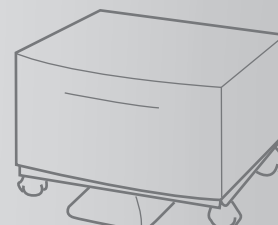
1 Finisher  
+  
HCF  
(High Capacity Feeder)  
2,100 sheets



1 Finisher  
+  
2 SCF Max.  
(Single Cassette Feeder)  
520 Sheets x 3  
+  
Short Stand



1 Finisher  
+  
Tall Stand



4-Bin Mailbox (MBT-40S)  
Output capacity: 400 sheets



2-Bin Finisher (SCX-FIN20S)  
Output capacity: 600 sheets

**Users enjoy significantly improved usability in the office environment. The 4-bin mailbox and 2-bin finisher allows for simple and efficient sorting and collating.**

- Mailbox mode – Allows multiple users to print to one machine, while separating prints into individual or group designated bins.
- Job Separating mode – Allows users to classify print jobs. Printouts are then sent out to separate bins in sequence of job order.
- Sorter/Collator mode – Printouts are stacked in sets to match the sequence of originals in each bin.
- Stacking – When a bin gets full, printouts continue to be stacked in the next bin. This feature allows a greater quantity of printing.

# Specifications

Specifications		MultiXpress CLX-8540ND	
Print			
Speed (Mono)*	Simplex: Up to 40 ppm in Letter / Duplex: Up to 35 ppm in Letter		
Speed (Color)*	Simplex: Up to 40 ppm in Letter / Duplex: Up to 35 ppm in Letter		
Resolution	Up to 9,600 x 600 dpi effective output		
First Print Out Time	Less than 14 seconds (from ready)		
Emulation	PCL5ce, PCL6, PostScript3, PDF Direct V1.4		
Duplex Print	Standard		
Copy			
Speed (Mono)**	Up to 40 cpm in Letter		
Speed (Color)**	Up to 40 cpm in Letter		
Resolution	Up to 1,200 x 1,200 dpi		
First Copy Out Time	Less than 13 seconds (from ready)		
Zoom Rate	25% ~ 400% (Platen), 25% ~ 200% (DADF Copy)		
Multiple Copy	1~999		
Duplex Copy	Using Platen (1:1 sided, 1:2 sided) Using DADF (1:1 sided, 1:2 sided short, 1:2 sided long, 2:1 sided, 2:1 sided; rotate side 2, 2:2 sided		
Copy Features	2-up and 4-up, ID Card copy (platen only), Poster copy (platen copy), Clone copy (platen only), Booklet copy, Covers, Transparencies, Book copy (platen only), Interrupt copy, Erase Edge (hole punch erase, border erase small original erase)		
Scan			
Compatibility	N/W TWAIN standard, WIA standard		
Method	Color CCDM		
Resolution	600 x 600 dpi (Optical) / 4,800 x 4,800 dpi (Enhanced)		
Scan To	HDD, Email, FTP, SMB, Client, USB Memory (Direct Scan)		
FAX (Optional)			
Compatibility	ITU-T G3, Super G3		
Modem Speed	33.6 Kbps		
Resolution	Mono: Up to 300 X 300 dpi, Color: Up to 200 X 200 dpi		
Memory	HDD Store, 500 jobs		
Auto Dial	1-touch Dial: 40 locations, Speed Dial: 200 locations		
Fax Feature	Color Fax, On Hook Dial, Pause, Auto Redial, Last Number Redial, PC Fax		
Paper Handling			
Input Capacity	Standard: 520-sheet cassette Tray, 100-sheet MP tray, Max: 2,720 sheets		
Output Capacity	500-sheet Face Down		
Media Sizes	3.85" x 5.83" ~ 8.5" x 14" Banner Size Printing: 8.5" x 47.2"		
Media Type	Plain Paper, Thick Paper, Thin Paper, Bond Paper, Color Paper, CardStock, Labels, Transparency, Envelope, Preprinted, Letterhead, Recycled Paper, Cotton, Archive		
ADF Capacity	100-sheet		
ADF Document Size	Width: 5.7"~8.5", Length: 5.7" ~ 14.0", for Single Page Scan: 5.7" ~ 15.7" and for Multi pages scan Bank Check Scan: 2.7" x 6.0"		
General			
LCD	800 x 480 7" WVGA Color Touch Screen		
Memory / Storage	1GB (Max. 2GB) / 160GB HDD		
OS Compatibility	[Windows]- 2000/XP (32/64bit)/2003 (32/64bit)/Vista (32/64bit)- Windows Terminal Services [Linux]- RedHat 8.0 ~ 9.0- Fedora Core 1~4- Madrake 9.2 ~ 10.1 - SuSE 8.2 ~ 9.2 [Mac]- Mac OS X 10.3~10.5, [Others]- Citrix Presentation Server		
Interface	Hi-Speed USB 2.0, Ethernet 10/100/1000 base TX, USB host 2.0 (Scan to USB, USB print)		
Noise Level	Printing: 54dB / Copying: 57dB / Standby: 43dB		
Duty Cycle, monthly	100,000 sheets/month		
Dimension (H x W x D)	32.1" x 23.9" x 22.6"		
Weight	157.6 lbs.		
Consumables			
Yield***	Black Toner Cartridge (20,000 standard pages) (CLX-K8540A) Cyan Toner Cartridge (15,000 standard pages) (CLX-C8540A) Magenta Toner Cartridge (15,000 standard pages) (CLX-M8540A) Yellow Toner Cartridge (15,000 standard pages) (CLX-Y8540A)		Black Image Drum (30,000 pages) (CLX-R8540K) Cyan Image Drum (30,000 pages) (CLX-R8540C) Magenta Image Drum (30,000 pages) (CLX-R8540M) Yellow Image Drum (30,000 pages) (CLX-R8540Y) Waste Toner Container (48,000 pages) (CLX-W8380A)
Options			
Options	FDI Kit (SCX-KIT20F) 1GB Memory (CLX-MEM400) Fax Kit (SCX-FAX210) Optional 520-Sheet Cassette Tray (SCX-S6555A)	High Capacity 2,100-Sheet Feeder (SCX-HCF100) 1-Bin Finisher (SCX—FIN11S) 2-Bin Finisher(SCX-FIN20S) 4-Bin Mailbox (SCX-MBT40S)	Staple Cartridge Refill (SCX-STP000) Short Stand (SCX-DSK10S) Tall Stand with Storage Cabinet (SCX-DSK10T) 100,000 Yield Maintenance Kit A (CLX-V8380A)
Green Management			
Green Management	Energy Star Compliant, S.T.A.R. Program (Samsung Toner Recycle Program)		

\*Print speed will be affected by Operating system used, computing performance, application software, connecting method, media type, media size and job complexity. \*\*Copy Speed is based on Single Document Multiple Copy.  
\*\*\*Declared continuous cartridge yield value in accordance with ISO/IEC 19798. Specifications are subject to change without notification.



©2009 Samsung Electronics America, Inc. Samsung is a registered mark of Samsung Electronics Corp., Ltd. Specifications and designs are subject to change without notice. Non-metric weights and measurements are approximate. All brand, product, service names and logos are trademarks and/or registered trademarks of their respective manufacturers and companies. Simulated screen images. Printed in USA on 50% recycled (25% post-consumer waste) paper using soy inks. PNT-CLX8540NDPBO-Oct09T

