

SHARP®

POWERFUL PERFORMANCE WITH THE TOUCH OF A FINGER



MX-4110N/4111N/5110N/5111N



A vision at work—MX-4110N/4111N/5110N/5111N—provides your business with the tools you need to gain the competitive advantage.

GROUNDBREAKING, FULL-COLOR LEDGER-SIZE DOCUMENT SYSTEMS

Sharp's new MX-4110N/4111N/5110N/5111N Color Series document systems combine the simplicity of touch-screen menu navigation with robust multi-tasking workflow features that can elevate your office productivity to new levels. A large 10.1" (diagonally measured) high-resolution tilting, touch-screen display offers groundbreaking real-time image preview with intuitive flick and tap editing to help ensure your documents are produced accurately and without waste. The new MX Color Series also offers many advanced



features such as a fully customizable home screen, dynamic action menus that provide feature-specific guidance, and an available full-size retractable keyboard for easy data entry. Plus, with Sharp's enhanced second-generation micro-fine toner technology and true 1200 x 1200 dpi print resolution, the new MX Color Series can help your business produce professional looking color documents in-house with breathtaking image quality that is also economical. The new MX-4110N/4111N/5110N/5111N Color Series has been built on the latest Sharp OSA® Development Platform, making integration with network applications and cloud services easier than ever. And, with Sharp's Industry leading security platform with standard 256 bit data encryption and overwrite protection, you can rest assured that your intellectual property is well protected.

Color Series

VERSATILE

MULTI-FUNCTIONAL

POWERFUL

MULTI-TASKING

INTUITIVE



Sharp's tilt screen allows you to adjust to a convenient position.

Advanced features plus multi-functional capability allow you to meet tomorrow's document needs today.

- Large 10.1" **high resolution touch-screen** display with **tilt view**
- **Real-time image preview** feature with flick, tap and slide menu navigation
- Fully **customizable home screen** feature enables users to add custom **backgrounds** and **custom icons**, change the display language and more
- **Action menus** provide users with **feature-specific guidance**
- Quickly scan both sides of a document at once with the standard **150-sheet duplex single pass feeder (DSPF)** on the MX-4111N and MX-5111N; a **100-sheet reversing single pass feeder (RSPF)** is standard on the MX-4110N and MX-5110N
- Full-size, **retractable keyboard** allows quick, easy and accurate data entry (standard on the MX-4111N/5111N)
- **Web browser** feature on the MX-5111N allows easy access to web-based information
- **1200 x 1200 dpi printing** provides clear, crisp images even on jobs with fine detail
- Industry leading **ImageSEND™** function scans documents to USB devices, network folders, e-mail and more
- Scans documents at up to **75 images per minute** (MX-4111N/5111N) in both Black and Color
- Network ready PCL® 6/Postscript® 3™ **printing system** with **direct print** function and available **XPS** option
- Robust 86 GB **document filing system** with thumbnail view and image preview features for easy identification
- Supports the latest **Sharp OSA® Development Platform**, enabling businesses to easily integrate with **network applications and cloud services**
- Supports Sharp's **award-winning** security platform with **standard 256 bit data encryption** and up to 7 times **overwrite protection**
- **Energy efficient belt fusing system** offers low power consumption, fast warm up and enhanced print quality





REVOLUTIONARY MFP FEATURES TO STREAMLINE YOUR WORKFLOW



Full-size retractable keyboard simplifies data entry (standard on the MX-4111N/5111N).



Easily edit documents in scan preview mode.



Intuitive copy screen shows options on the left and menu guidance on the right.



Available paper capacity stores up to 5,600 sheets.

Flexible design to meet the needs of your environment.

A Smart Touch-Screen Helps You Get Your Work Done Fast

The new MX-4110N/4111N/5110N/5111N workgroup color document systems feature a **10.1"** (diagonally measured) **high-resolution LCD** that goes beyond basic touch-screen menu navigation. With advanced features that include **flick, tap, and slide**, you can quickly access the powerful functions of the new MX Color Series. In addition, a **tilting display panel** provides enhanced accessibility. A built in full-size retractable keyboard makes data entry quick and easy.*

Easily Check and Edit Your Original Document

Save time and help reduce waste by correctly executing your copy or scan job the first time. With Sharp's **real-time scan preview and edit** functions, you can quickly rotate or delete pages, insert blank sheets, remove artifacts, change the color mode, even check the staple position before executing your job. Dynamic action menus provide **feature-specific guidance**, so it is easy to determine your choices for each operation. For comprehensive, step-by-step instructions on any operation, simply open the **on-line user manual** and navigate to the feature you need.

High Image Quality You Expect with the Performance You Need

The new MX-4110N/4111N/5110N/5111N workgroup color document systems utilize a powerful multi-tasking controller designed to quickly execute complex copy, print and scan jobs even in busy office environments. Plus, with print speeds of **41ppm** and **51ppm**, the new MX Color Series can help elevate your office productivity to new levels. With **1200 x 1200 dpi** print resolution and Sharp's enhanced second-generation micro-fine toner technology, your business **can produce professional looking color documents** with breathtaking image quality.

Flexible Configurations for Today's Unique Office Environments

The new MX Color Series offers a flexible paper handling system that is also user-friendly. With **rugged paper tray handles** for easy access and available **on-line paper capacity for up to 5,600** sheets with options, the MX-4110N/4111N/5110N/5111N is ready when you are. A standard 150-sheet duplex single pass feeder (on the MX-4111N/5111N), 100-sheet reversing single pass feeder (on the MX-4110N/5110N) combined with automatic trayless duplexing, electronic sorting and integrated offset stacking, allow you to complete even large jobs in a snap.

Advanced Finishing Adds the Final Touch

The MX Color Series offers a choice of **four high-performance finishers** that can give your documents a professional look and feel. Choose from a **compact inner finisher**, a floor-standing 1K **saddle-stitch finisher**, or a 4K saddle-stitch finisher or 4K stacking finisher. All finishers offer three-position stapling and an available 3-hole punch.



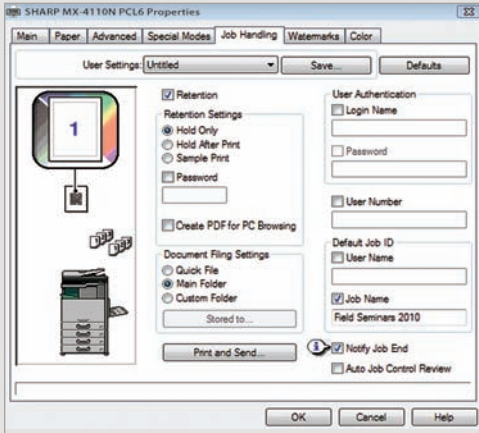
MX-5111N shown with 4K saddle-stitch finisher (MX-FN18) and optional MX-LC11.



MX-5111N shown with compact inner finisher.

*Standard on MX-4111N/5111N.

VERSATILE FUNCTIONALITY FOR OPTIMAL QUALITY AND RESULTS



With Sharp's advanced job handling, you can retain print jobs on the MX hard drive for reprinting at a later date, and you can even choose to create a PDF for browsing the thumbnail from a PC.



Sharp's integrated network scanning offers one-touch document distribution to up to seven destinations.



Sharp's document filing system with thumbnail preview makes it easy to locate and retrieve stored jobs.

Advanced technologies deliver outstanding output quality, flexible document distribution at your fingertips.

Exceptional Print Quality with Professional Output

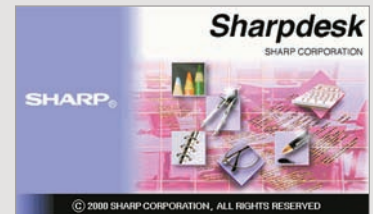
With the MX-4110N/4111N/5110N/5111N Color Series, your business can produce brilliant, high-color documents, as well as razor-sharp B&W documents. Plus, with **1200 x 1200 dpi resolution**, even documents with fine detail will look great! Easy-to-use print drivers allow you to set up complex jobs with just a few mouse clicks. The **standard PostScript® 3™ driver** delivers extensive color control options, so you can manage color consistency right from your desktop. For even more flexibility, add the **optional XPS kit**. With Sharp's **advanced job retention** features, jobs can be stored on the MX-4110N/4111N/5110N/5111N hard drive to be reprinted again and again by walk-up users or from the embedded web page.

Integrated Network Scanning

With Sharp's powerful **ImageSEND™** technology, you get one-touch distribution features that centralize document workflow, help reduce mail costs and help save time. With up to **seven destinations**—E-mail, Desktop, FTP, Network Folders (SMB), USB, Fax and Internet Fax—getting your document where it needs to go is as easy as pushing a button. High-volume workgroups will appreciate the **Send to Group** mode that allows you to mix group broadcast to E-mail, Fax, and Internet Fax for increased efficiency.*

Convenient E-mail Distribution

With Lightweight Directory Access Protocol (LDAP), there's no need to manually enter a recipient's complete e-mail address. Simply enter the first few characters and the MX automatically searches and displays a list of matching names. And, with **Sharpdesk®** personal document management software, users can easily organize their scanned documents and integrate them into everyday workflow.



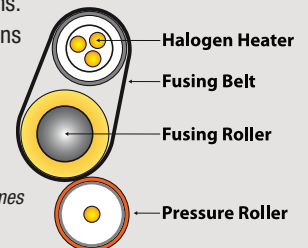
Sharpdesk personal document software.

Innovative Document Filing System For Easy Access

Sharp's easy-to-use document filing system provides up to 86 GB of hard drive space to **store frequently used files** like forms, templates and reports. With **thumbnail preview** mode, stored jobs can be located and retrieved quickly. An advanced backup system and PIN-access security helps ensure your files are safe. For critical environments, an optional **back-up hard drive** is available.

Advanced Energy Saving Features

Sharp's new MX Color Series utilizes several energy efficient technologies to minimize power consumption and maximize energy savings. An **LED exposure lamp** reduces power significantly when compared to conventional exposure lamps. A customizable seven-day power management scheduler allows businesses to define the days and times when power will be turned-on and turned-off. Also, with Sharp's **Auto Power Management** function the MFP can be set to shut-off automatically based on usage trends. Sharp's **Eco-Scan** mode can **shut-off the fuser** when scanning documents, previewing images, faxing and other operations. A state-of-the-art **belt fusing system** consumes less power, shortens warm-up time and helps eliminate roller marks sometimes caused by conventional fusing.



State-of-the-art belt fusing system consumes less power and shortens warm-up time.

*Some features require optional equipment.

INTUITIVE USER INTERFACE ON 10.1-INCH COLOR LCD...

Sharp's new high resolution touch-screen display offers the customization and ease-of-use your business needs to elevate your office productivity to the next level. With the ability to change background screens, the layout and naming of the function keys, language display setting and more, you can quickly set up a custom user interface that meets the needs of your office. Whether your MFP requirements are simple or complex, the MX-4110N/4111N/5110N/5111N Color Series document systems can help you get the job done fast!

Navigation



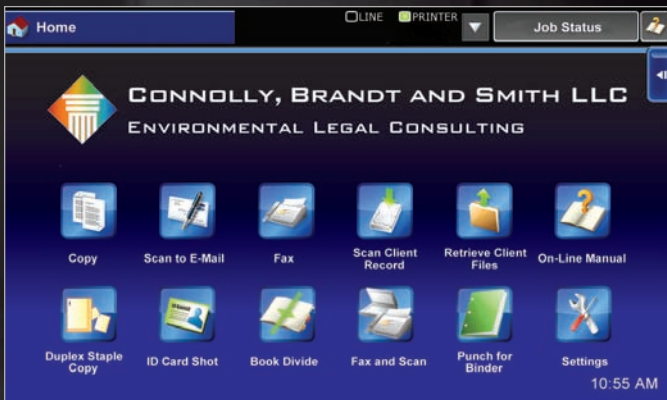
NAVIGATES YOU SMOOTHLY THROUGH ADVANCED MFP FUNCTIONS



Change the Theme: Easily change the menu colors and icon layout to suit the preferences of users in your office.



Change the Language: Walk-up users can choose from 24 different display languages with just a few key strokes.



For Legal Environments: Set up custom keys for client files and other frequently used functions.



For a College Campus Office: Set up a simple screen for walk-up users to retrieve applications and course offerings.



For Medical Environments: Set up custom keys to store and retrieve insurance information, prescriptions and more.



For Financial Environments: Store and retrieve monthly financial reports, scan loan applications and more.

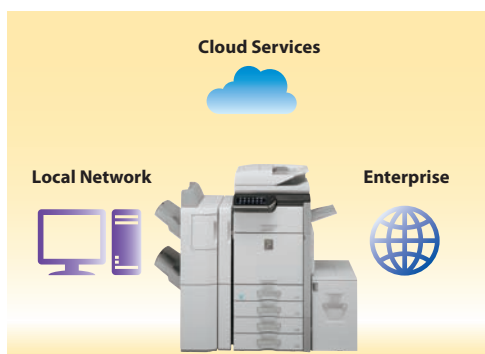


GET MORE OUT OF NETWORK RESOURCES



Sharp OSA® technology at a glance

- Automate tasks and save time with seamless integration with network applications and cloud-enabled services.
- Virtually eliminates repetitive tasks and streamlines workflow, increasing efficiency.
- Maximize your return on investment with tighter integration among IT assets.
- Industry standard programming leads to faster deployment of new solutions.



Sharp OSA Technology allows businesses to leverage the power of their network applications, back-end systems, even cloud-enabled services

Streamline your document workflow and enhance your productivity with Sharp OSA® Technology.

Integrating With Network Applications and Cloud Services Has Never Been So Easy

The MX-4110N/4111N/5110N/5111N Color Series offers **powerful document workflow capabilities** to help businesses leverage their network infrastructure, cloud-enabled services and more!* While others are limited to a small circle of productivity, the Sharp OSA Development Platform allows businesses to leverage the power of their network applications, back-end systems, even cloud-enabled services, right from the touch-screen panel of the new MX Color Series.

Save Time, Increase Efficiency

You'll save time and increase the efficiency of everyday tasks with Sharp OSA Technology because it can be virtually seamless to the user. Any MX-4110N/4111N/5110N/5111N anywhere in the organization can display choices that were once only available on a desktop PC. With **one-touch access** to business applications via Sharp OSA integration, you can start and finish a document distribution task without worry.

Customized Integration

Sharp OSA Technology also provides **powerful customization**. With the ability to personalize applications and processes specific to your business, Sharp OSA Technology can help eliminate redundancy and **streamline workflow**, helping to save time and **optimize productivity**. The latest version of Sharp OSA Technology can reach beyond the firewall, enabling cloud-based applications over the internet. And since Sharp OSA Technology utilizes industry-standard network protocols such as SOAP and XHTML, third party software developers can deliver customized solutions to your business faster than ever.

The Convenience You Want With the Security You Need

The MX-4110N/4111N/5110N/5111N Color Series with the Sharp OSA Development Platform is the logical choice for providing fast, **flexible access to documents and applications**...no matter where you are in the office. You also get the controlled access and tracking ability you require with tighter integration capabilities for network security and accounting applications.

*Some features require optional equipment.



ADVANCED DEVICE MANAGEMENT TOOLS MAXIMIZE EFFICIENCY



Sharp Remote Device Manager.

The MX-4110N/4111N/5110N/5111N Color Series document systems enhance operational efficiency through versatile device management capabilities.

Sharp Remote Device Manager (SRDM)

Make management of your MX-4110N/4111N/5110N/5111N simple and straight forward with Sharp Remote Device Manager (SRDM). This easy-to-use software allows you to take control of the versatile system features and simplifies installation and management.

- With **Printer Status Monitor**, network users can view printer conditions, check paper levels, toner, and more, all through an easy-to-use interface.
- With advanced Sharp Remote Device Manager, administrators can easily manage the setup, configuration, device settings, cloning and more! Advanced features such as **Remote Front Panel** allow administrators and support personnel to view and control the LCD panel of the machine remotely from virtually any PC on the network! Plus, with event-driven, real-time service alerts, administrators and supervisors can achieve higher productivity. Now it is easier than ever to view service logs, click counts, history reports and more.
- Experience the convenience of an **Embedded Web Page** right from your desktop! This advanced web-based management tool allows users to create and manage their own network scanning destinations, profiles and web-links. Administrators can access device settings, color control, account information and security settings.



Remote Front Panel.

Take Charge of Color Usage and Costs

With Sharp's device management system, administrators and supervisors can **define user groups** on the MX-4110N/4111N/5110N/5111N to manage and restrict features, such as color copying, scanning or printing. Easily set up a custom user group to manage page counts (copy, print, scan or fax operations) for both color and B&W. This helps to simplify cost management of color imaging. The MX-4110N/4111N/5110N/5111N can store profiles for up to 1000 users.

24/7 Training with My Sharp

Managing all of the advanced features of your Sharp product is simple and easy. Ask your Authorized Sharp Dealer about the **My Sharp** website. This dedicated customer training website is customized to your MX-4110N/4111N/5110N/5111N and allows you to locate resources and find information specific to your configuration, truly helping you maximize your investment.



Embedded Web Page.



SHARP

PRIVACY

AUTHORIZATION

CONFIDENTIALITY

PROTECTION



Sharp's Standard Key Security Features at a Glance

- 256 Bit Data Encryption
- Up to 7 times Data Overwrite Protection
- Group Account Management for up to 1000 Users
- Confidential Printing
- Port Management
- IP/MAC Address Filtering

Innovative document and device protection helps ensure confidentiality.

To help protect your data, the MX-4110N/4111N/5110N/5111N offers several layers of **Standard Security**, making Sharp the optimum choice to help protect employees' privacy and intellectual property. As a leader in office equipment security, Sharp makes it easy for virtually any business or government entity to safely deploy digital copying, printing, scanning and faxing.

Authority Groups

Advanced **Account Management** enables administrators to set authority groups for access to features of the MX-4110N/4111N/5110N/5111N. Administrators can control which department, for instance, has full access to copying, printing, scanning and/or fax. Walk-up users enter a code, Local Name and Password, or LDAP User Authentication to access the features assigned to their group.

Data Encryption and Overwrite

To help protect your data, the MX-4110N/4111N/5110N/5111N can encrypt document data using AES (Advanced Encryption Standard) **256-bit encryption**. The MX-4110N/4111N/5110N/5111N can also erase the temporary memory on the hard drive by overwriting the encrypted data up to seven times, offering an unprecedented level of assurance. A convenient **End-of-Lease feature** overwrites all data, including document filing area, user data, job status data and address book.

Network Scanning Access Control

To help protect your network from unauthorized e-mail communications, the MX-4110N/4111N/5110N/5111N supports **User Authentication**, requiring users to login before performing any network scanning operations.

Control Device Access Over the Network

To help restrict access to the device over the network, the MX-4110N/4111N/5110N/5111N offers IPsec, SMB and extended support for **SSL Encryption** (Secure Sockets Layer), **IP/MAC** address filtering, IEEE 802.1x authentication, protocol enable/disable and port management for maximum security.

Documents Remain Confidential

The MX-4110N/4111N/5110N/5111N offers **Confidential Printing**, which when used, requires users to enter a PIN code in order to print a queued document. To help protect your direct-print documents from unauthorized viewing, the MX-4110N/4111N/5110N/5111N offers encrypted PDF printing and scanning. Additionally, **Secure Fax Release** ensures received fax documents are held in memory until an authorized user enters a PIN code, so that compliance with healthcare regulations such as HIPAA is easier.

Tracking and Auditing Information

Legislation and industry policies require companies to be more aware of information flow from their offices. Sharp offers both built-in and additional hardware/software which allows users to **control, access and track usage** of each device on the network.

Data Security Kit (Optional)

For maximum protection, the optional data security kit offers additional features, such as **Data Overwrite on-demand** and at Power Up, Document Filing access control, **Incorrect Password Lockout** and Restricted Status Display and Restricted List printing.

These scalable security offerings aim to protect your intellectual property, preserve confidential information and help your business to meet regulatory requirements, such as the Health Insurance Portability and Accountability Act (HIPAA), and the Gramm Leach Bliley Act (GLB). For additional information visit: www.sharppusa.com/security.

ENVIRONMENTALLY RESPONSIBLE, ECOLOGICALLY FRIENDLY



Sharp's ongoing commitment and dedication to developing energy efficient document systems set a high standard for the industry.

Designed with a Strong Commitment to Helping Protect the Environment

The MX-4110N/4111N/5110N/5111N document system utilizes Sharp's enhanced second generation micro-fine toner technology, which offers a lower consumption rate than conventional toners. This also results in less packaging material and longer replacement intervals. Additionally, all Sharp supplies are packaged using fully recyclable materials. Power consumption on the MX-4110N/4111N/5110N/5111N is among the lowest in the industry and supports two different energy saving modes to reduce or shut off power after a set interval. All Sharp document systems belong to the EnergyStar® program and RoHS program.



An Economical, Low Maintenance Color Document System that Makes Sense

The MX-4110N/4111N/5110N/5111N is designed to accommodate both large and small office environments. With a compact wingless design, the dimension of each base model is less than 26" x 30". Our new long-life consumable parts and supplies help minimize service intervals and down time, resulting in lower operating costs.

Sharp's Environmental Leadership

As a testament to our commitment to the environment, Sharp was a former recipient of the *Excellence in Partnership Green Contractor Award* and the *Evergreen Award* from the US Government's General Services Administration and the Coalition for Government Procurement. The Green Contractor Award recognizes contractors that have made the best overall commitment to the environment by offering environmentally-friendly products and services or adhering to environmentally sound manufacturing procedures. The Evergreen Award identifies environmentally-friendly businesses and their efforts in recycling and waste reduction practices. Please visit www.sharpusa.com/environment to learn more about our environmental leadership.

Toner Recycling Program

As part of our commitment to helping preserve the environment, Sharp offers customers a toner recycling program for all Sharp copiers and MFP products. Sharp encourages customers to recycle their used Sharp toner cartridges by providing a pre-paid shipping label for their return to our facility. Please visit www.sharpusa.com/recycle to learn more.

MX-4110N/4111N/5110N/5111N SPECIFICATIONS

Main Specifications

MX-4110N/4111N	Base models include multitasking controller, 100 sheet RSPF (MX-4110N/5110) 150 sheet DSPF (MX-4111N/5111N), PCL6/5c/PS3 network printing/scanning, auto duplexing, 2 x 500-sheet paper drawers, 100-sheet bypass tray. Developer is included.				
MX-5110N/5111N	Base models include multitasking controller, 100 sheet RSPF (MX-4110N/5110) 150 sheet DSPF (MX-4111N/5111N), PCL6/5c/PS3 network printing/scanning, auto duplexing, 2 x 500-sheet paper drawers, 100-sheet bypass tray. Developer is included.				
Type	Desktop, color multi-function digital document system				
Display	10.1" (diagonally measured) color dot matrix high-resolution touch panel tilting display. 1024 x 600 dots (W-SVGA)				
Functions	Copy, print, network print, network scan, document filing and fax ¹				
Copy System	Dry electrostatic transfer/Dual component developer/Magnetic brush development/OPC drums/Belt type fusing/white LED exposure				
Originals	Sheets and bound documents				
Max Original Size	11" x 17"				
Copy Size	Min. 5/8" x 8 1/2", Max. 11" x 17" + 12" x 18"				
Copy Speed	41/51 ppm B&W/Color (8 1/2" x 11")				
Multiple Copy	Max. 999 copies				
First Copy Time (Seconds)²	MX-4110N	MX-4111N	MX-5110N	MX-5111N	
	Black	Color	Black	Color	
	Platen Glass	4.7	6.7	4.1	5.7
	Doc. Feeder	7.7	9.8	7.4	10.3
		7.0	8.8	6.7	9.2
Warm Up Time	34 seconds or less ²				
Magnification	25% to 400% in 1% increments (with document feeder 25%-200%)				
Original Feed	MX-4110/5110N: 100-sheet RSPF/MX-4111N/5111N: 150-sheet DSPF				
Scan Speed	RSPF Copy/Scan: Up to 51 IPM ² DSPF Copy: Up to 75 IPM (B&W)/51 IPM (Color); DSPF Scan: Up to 75 IPM ²				
Original Sizes	5 1/2" x 8 1/2", 8 1/2" x 11", 8 1/2" x 11" R, 8 1/2" x 14", 11" x 17"				
Paper Feed System	Standard: (2) 500-sheet paper drawer (letter/legal/ledger/statement size) and 100-sheet bypass tray (letter/legal/ledger/statement/envelope size). Optional: Single or double drawer paper deck (500 or 1000 sheets), letter/legal/ledger/statement size.				
Paper Types	Paper drawers: 16 lb. bond -110 lb. index. Other paper types include plain, pre-printed, recycled, pre-punched, letterhead and color paper. Bypass Tray: 16-28 lb. bond (plain paper), 13-16 lb. bond (thin paper), 110-140 lb. index (heavy paper), 20-24 lb. bond (Monarch/Com-10 envelope), tab paper (letter). Also label paper, gloss paper, pre-printed, recycled, pre-punched, letterhead, color paper and OHP film.				
Duplexing	Standard automatic duplex copying and printing				
CPU	Up to 1250 MHz Multi-Processor Design				
Interface	RJ-45 Ethernet (10/100/1000Base-T), USB 2.0 (2 host ports, front and rear), USB 2.0 (1 device port, rear)				
Memory	Standard 2 GB Copy/Scan; 1 GB Printer Memory				
Hard Disk Drive	160 GB; 86 GB for document filing				
Copy Resolution	Scan: B&W/color: 600 x 600 dpi; Copy Output: B&W/color: 600 x 600 dpi				
Color Modes	Auto Color Control (ACS), Full Color Mode, Monochrome (B/W)				
Exposure	Modes: Automatic Text, Text/Photo, Text/Printed-Photo, Printed-Photo, Photo, Map, Pale-Color Document. Settings: Auto or 9 step manual				
Control	256 gradations/2 levels (monochrome)				
HalfTone	256 gradations/2 levels (monochrome)				
Copy Features	Scan-Once Print-Many, electronic sorting, offset-stacking, Auto Color Sensing (ACS), Auto Paper Sensing (APS), Auto Magnification Sensing (AMS), image preview, image edit, auto tray switching, rotation copy, reserve copy, tandem copy, book copy, margin shift, tab-paper insertion, edge erase, center erase, book divide, dual page copy, cover pages, insert pages, OHP insertion, job build, card shot, blank page skip, mirror image, black-white reversal, centering, proof copy, 2-in-1/4-in-1/8-in-1, pamphlet, watermark custom image, job programs.				
Account Control	Up to 1000 users. Supports user-number authentication (on device), login name/password (on device) or login name/password (on device via LDAP server) for Copy, Print, Scan, Fax and document management.				
Output Tray Capacity	Main output tray (top) 400 sheets (face down); optional eject tray (right 1 side) 100 sheets (face down)				
Firmware	Flash ROM with local (USB), network update capability and firmware update 1 to N with SRDM (Sharp Remote Device Management)				
Configuration	Web-based management with user/administrator level login, cloning (1 to N) with SRDM and remote front panel access				
Service/Functions	Remote front panel, remote access to service logs and click counts				
Accessibility	Tilt Front Panel, Adjustment of Key Touch-Send and Speed, Concave Key, Document Feeder Free Stop, Job Programs, Remote Front Panel, Universal Grip for Paper Trays, and Disable Screen Timeout				
Environmental Standards	International Energy Star Program Ver. 1.1, Law on Promoting Green Purchasing, European RoHS (Restriction of Hazardous Substances)				
Power	AC 100-127 VAC, 60 Hz, 16 Amps				
Power Consumption	Maximum: 1440 W or less				
Weight	MX-4110N/4111N: Approx. 276.5 lbs./MX-5110N/5111N: 278 lbs.				
Approx. Dimensions	25 1/2" (w) x 30" (d) x 38" (h)				

Network Printing System

PDL	Standard PCL® 6/PCL5c compatible, PostScript® 3™ compatible, optional XPS	
Resolution	1200 x 1200 dpi	
Print Speed	41/51 pages per minute (8 1/2" x 11")	
Print Drivers	Windows 2000, Windows Server® 2003-2008, Windows XP, Windows XP x64, Windows Server x64, Windows Vista®, Windows Vista® x64, Windows 7, MAC OS®, 9.2.2, OSX (including 10.2.8, 10.3.9, 10.4.11, 10.5-10.8, 10.6-10.6.1), all MAC PPD.	
Features	Auto configuration, continuous printing, electronic sorting, offset stacking, N-up printing, duplex printing, transparency inserts, margin shift, image rotation, different cover page, poster print, job bypass print, job retention, confidential print, proof print, user authentication, image stamp and watermarks. Additional features: Multiple pamphlet, network tandem print, carbon copy print mode, different cover page/last page/other page, form overlay, tab paper settings, tab printing, chapter inserts, page interleave and bar code font printing ¹	
Direct Printing	File Types: TIFF, JPEG, PCL, PRN, TXT, PDF, Encrypted PDF, PostScript and (optional) XPS ¹ Methods: FTP, Web page, E-mail and USB memory	
Resident Fonts	80 outline fonts (PCL), 136 fonts (PS)	
Interface	RJ-45 Ethernet 10/100/1000 Base-T, USB 2.0	
Operating Systems	Windows Server 2003-2008, Windows 2000/XP, Windows Vista, Windows 7, MAC OS 9-9.2.2, MAC OS X 10.2.8, 10.3.9, 10.4.11, 10.5-10.8, 10.6-10.6.5, Novell® Netware® 3x, 4x, 5x, Sun® OS 4.1x, Solaris® 2x, Unix®, Linux® and Citrix® (Metaframe, Presentation Server 4, 4.5) and Windows Terminal Services. ¹	
Network Protocols	TCP/IP (IPv4, IPv6, IPSEC) SSL (HTTP, IPP, FTP), SNMPv3, SMTP, POP3, LDAP, 802.1x for Windows and Unix, LPD and LPR for Unix. IPX/SPX® for Novell environments. EtherTalk® and NetBEUI. AppleTalk® for Macintosh® environments. ¹	
Printing Protocols	LPR, IPP, IPPS, PAP, Raw TCP (port 9100), FTP and Novell Printer/Printer	
Network Security	IP/MAC address filtering, protocol filtering, port management, user authentication and document administration. ¹	
Security Standards	IEEE-2600™-2008, DoD (NSTISSP) #11, DoD Directive 8500.2, DoD (DISA) ¹	

Network Scanning System

Scan Modes	Standard: Color, monochrome, grayscale	
Max Original Size	11" x 17"	
Optical Resolution	600 dpi	
Output Modes	600 dpi, 400 dpi, 300 dpi, 200 dpi, 150 dpi, 100 dpi	
Image Formats	Monochrome: TIFF, PDF, Encrypted PDF, XPS Color: Grayscale, Color TIFF, JPEG, PDF, Encrypted PDF, XPS Internet Fax: TIFF-FX, FIFF-F, TIFF-F ¹	
Image Compression	Monochrome Scanning: Uncompressed, G3 (MH), G4 (MR/MMR) Color/Grayscale: JPEG (high, middle, low) Internet Fax mode: MH/MMR (option)	
Scan Destinations	E-mail, Desktop, FTP, Folder (SMB), USB, Internet fax (option), Super G3 fax (option)	
One-touch Dest.	Up to 2000 (combined scan destinations)	
Group Destinations	Up to 500	
Programs	48 (combined)	
Max. Jobs	Up to 100	
Network Protocols	TCP/IP and SSL (includes HTTP, SMTP, LDAP, FTP, POP3), SMB, ESMTP and 802.1x.	
Network Security	E-mail server user authentication for LDAP and Active Directory	
Software	Sharpdesk® desktop personal document management software (1 user license included)	

B&W Super G3 Fax Kit (option)

Transmission	Super G3, G3
Modem Speed	33.6 KBPS ³
Compression	JBIG, MMR, MR, MH
Scanning Method	Sheet fed simplex or duplex or book
Max. Resolution	400 dpi
Transmit Speed	Approx. 2 seconds with Super G3/JBIG ⁴
Auto Dialing	Up to 2000 (combined scan destinations)
Group Dial	Up to 500 destinations
Inbound Fax	Routing: Forwards received fax data to E-mail
Long Length	Up to 31 1/2" (for transmission)
Originals	
Programs	48 (combined)
Memory	Shared
HalfTone	256 levels

Saddle Stitch Finisher (MX-FN10: option)

Type	Console finisher with dual exit trays (mounts on left side of host machine)
Output Trays	Upper tray: Offset stack tray Lower tray: Book tray for saddle stitch
Output Capacity	1000 sheets (letter/statement size) or 500 sheets (legal, ledger, letter)
Stapling	Up to 50 sheets (letter/statement) or 25 sheets (legal, ledger or mixed)
Output Delivery	Face down
Stapling Media	Plain paper, letter/legal/ledger size or mixed
Stapling Positions	1 front, 1 rear, or both
Saddle Stitch Function	Center stitch/center folding (2 staples) letter/legal/ledger paper sizes
Saddle Stitch Max. Sets	Up to 10 sets (11-15 sheets per set)/15 sets (6-10 sheets per set)/20 sets (1-5 sheets per set)
Power Cons.	70 W or less (MX-FN10)/138 W or less (MX-FN18)
Hole Punching	Optional three-hole punch unit MX-PNX5B (MX-FN10)/MX-PNX6B (MX-FN18)
Weight	Approx.: 88 1/2 lbs. (MX-FN10)/Approx.: 161 lbs. (MX-FN18)
Dimensions	26" (w) x 25" (d) x 39" (h) (MX-FN10 with tray extended)

4K Stacking Finisher (MX-FN11: option)

Type	Console stacking finisher with dual exit trays (mounts on left side of host machine)
Output Trays	Fixed position upper tray and offset stacking lower tray
Output Capacity	Upper tray: 1,550 sheets (letter size, non-stapled) Lower tray: 2,450 sheets (letter size, non-stapled)
Stapling	Three position; Up to 50 sheets (letter/statement)
Power Consumption	Approx. 140 W
Hole Punching	Optional three-hole punch unit MX-PNX6B
Weight Approx	97 lbs.
Dimensions	20 1/2" (w) x 25 1/2" (d) x 43 1/2" (h) (MX-FN11 with tray extended)

Optional Equipment

MX-DE15	Stand/1 x 500 Sheet Paper Drawer
MX-DE16	Stand/2 x 500 Sheet Paper Drawer
MX-51ABD	Rolling Cabinet Base
MX-LC11	Large Capacity Tray (requires MX-DE15 or MX-DE16)
MX-FNX9	Inner Finisher
MX-PNX1B	3 Hole Punch Unit (requires MX-FNX9)
MX-FN10	1K Saddle Stitch Finisher
MX-PNX5B	3 Hole Punch Unit (requires MX-FN10)
MX-FN11	4K Stacking Finisher
MX-FN18	4K Saddle Stitch Finisher
MX-RB11	Paper Pass Unit (requires MX-FN10/11/18)
MX-PNX6B	3 Hole Punch Unit (requires MX-FN11/18)
MX-SCX1	Staple Cartridge (5,000 staples) (requires MX-FNX9/FN10)
AR-SC2	Staple Cartridge (5,000 staples) (requires MX-FN11/18)
AR-SC3	Staple Cartridge (2,000 staples) (requires MX-FN10/18)
MX-TRX2	Right Exit Tray
MX-TU13	Center Exit Tray
MX-PUX1	XPS Expansion Kit (Requires MX-SHP1GBCR3)
MX-SHP1GBCR3	1GB Memory Upgrade (Required for MX-PUX1)
MX-FX11	Fax Expansion Kit
MX-FWX1	Internet Fax Kit
MX-PF10	Bar Code Font Kit
AR-SU1	Stamp Unit (Requires AR-SV1 Stamp Cartridge)
AR-SV1	Stamp Cartridge
MX-KB11	Keyboard (Standard on the MX-4111N/5111N)
MX-EB11	Enhanced Compression Kit
MX-EB12	Mirror Expansion Kit
MX-AMX1	Application Integration Module
MX-AMX2	Application Communication Module (standard on MX-5111N)
MX-AMX3	External Accounting Module
MX-FR33U	Commercial Data Security Kit (not available at time of launch)
MX-EC50	CAC Reader (Requires Data Security Kit)
DVENDPS	Generic Vendor Interface Kit

Supplies

MX-51NTBA	Black Toner Cartridge
MX-51NTCA	Cyan Toner Cartridge
MX-51NTMA	Magenta Toner Cartridge
MX-51NTYA	Yellow Toner Cartridge
MX-51NVBA	Black Developer
MX-51NVSA	Cyan/Magenta/Yellow Developer
MX-51NRSA	Drum

¹ Some features require optional equipment. See your local dealer.

² May vary depending on product configuration, machine settings and operating and/or environmental conditions.

³ Actual transmission time will vary based on line conditions.

⁴ Based on Sharp Standard Test Chart with approximately 700 characters, letter size in standard resolution.



SHARP ELECTRONICS CORPORATION
Sharp Plaza, Mahwah, NJ 07459-1163
1-800-BE-SHARP • www.sharpsusa.com

Design and specifications subject to change without notice. Sharp, Sharp OSA, Sharpdesk, My Sharp, and all related trademarks are trademarks or registered trademarks of Sharp Corporation and/or its affiliated companies. Windows, Windows NT, Windows Server and Windows Vista are trademarks or registered trademarks of Microsoft Corporation. All other trademarks are the property of their respective owners.

