

SHARP®

100th
ANNIVERSARY

HIGH-SPEED AND LIGHT PRODUCTION DOCUMENT SYSTEMS



MX-M904 MX-M1054 MX-M1204

Sharp's New High-Speed and Light Production Monochrome Series Raise the Bar for High-Volume Copying and Printing in the Business World.

HIGH PERFORMANCE WITH UNMATCHED VERSATILITY

PERFORMANCE

From walk-up office environments and corporate data centers to high-volume CRD and copy rooms, Sharp's new top-of-the-line MX-M904, MX-M1054 and MX-M1204 High-Speed Light Production Monochrome Series provide advanced technology and features that will streamline your document workflow like never before. The MX-M904, MX-M1054 and MX-M1204 have been designed from the ground up to handle the rigorous demands of high-volume environments. With three engine speeds (90ppm, 105ppm and 120ppm), standard networking and flexible configurations these high volume workhorses are a perfect fit where productivity and reliability are essential.

A large 10.1" (diagonally measured) high-resolution, touch-screen display offers real-time scan preview with intuitive flick-and-tap editing to help ensure your documents are produced accurately and without waste. With Sharp's micro-fine toner technology combined with 1200 x 1200 dpi print resolution and true Adobe® PostScript®, your business can produce professional-looking monochrome documents with razor-sharp image quality that is also economical. A new paper feed option utilizes air-feed technology, which offers higher reliability and enhanced media capabilities.

Built on the latest Sharp OSA® development platform, the MX-M904, MX-M1054 and MX-M1204 make integration with network applications and cloud services easier than ever. Sharp's industry-leading security platform incorporates standard 256-bit data encryption and overwrite protection to safeguard your business's intellectual property. And when it comes time to trade in, a convenient End-of-Lease feature can erase all job data and user data.



PRECISION ENGINEERED FOR HIGH PRODUCTIVITY



POWERFUL

INTUITIVE

MULTI-TASKING

DURABLE

FLEXIBLE

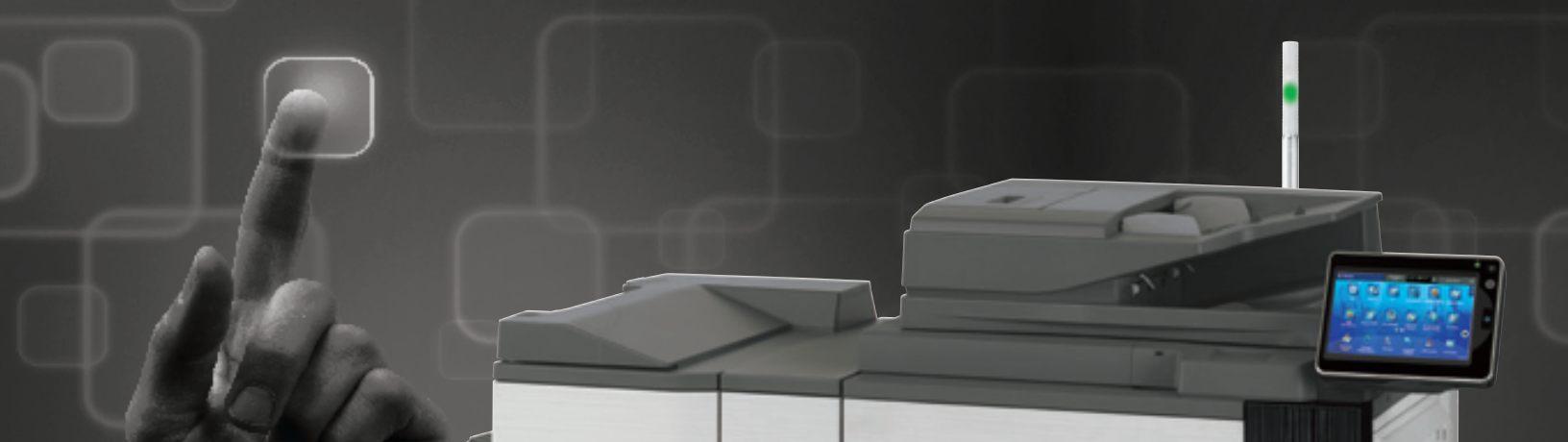


Innovative features plus multi-function capability allow you to meet tomorrow's document needs today.

- Flexible modular design provides a **wide variety of configurations** from basic high-speed copying and printing to **professional folding** and **booklet making**
- **Scan preview** feature offers on-the-fly page editing with easy finger-tip navigation
- 250-sheet **Duplex Single Pass Feeder (DSPF)** scans documents at up to 200 images per minute
- New **triple air-feed** paper handling option offers **high reliability** and is virtually maintenance-free
- Up to **13,500-sheet paper capacity** supports media up to **110 lb. cover stock** (300 gsm)
- Available **5,000-sheet paper stackers** with roll-out carts can be connected in tandem for unattended operation of up to **10,000 sheets**.
- Standard PCL®6 and **true Adobe® PostScript®3™** with available Windows® XPS printing systems
- **Large 10.1"** (diagonally measured) high-resolution **color touch-screen display** with tilt viewing



- True **1200 x 1200 dpi** printing provides beautiful images and enhanced clarity for fine details such as small text and graphics
- **Job Management** features make it easy to print on-demand with the ability to retain jobs, combine jobs, repaginate jobs, edit pages within jobs and more
- Integrated **web browser** provides easy access to web based resources for quick access to information and convenient printing
- Supports the latest **Sharp OSA® development platform**, enabling businesses to easily integrate with network applications and cloud services
- **Auto Power Management** function with **Intelligent Monitoring** can turn on and turn off the machine based on usage trends
- Supports Sharp's award-winning security platform with standard **256-bit data encryption** and up to 7 times **data overwrite protection**
- Convenient **End-of-Lease feature** can erase all files on the hard disk drive, all user data, job status data and address book data at trade-in time



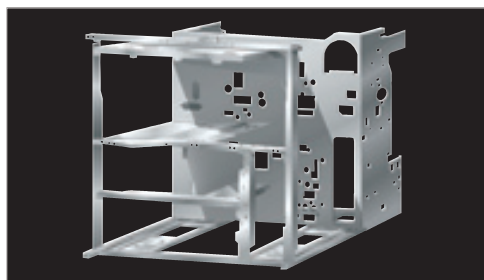
INTELLIGENT FEATURES HELP STREAMLINE YOUR WORKFLOW



Intuitive menu screens enable you to easily edit documents in scan preview mode.



Triple air-feed LCT paper trays maximize reliability and minimize downtime. Pneumatic sensors maintain consistent air flow.



A highly-rigid frame design helps better protect and isolate critical machine components. This also ensures increased reliability and durability in order to withstand heavy use from high-speed and high-volume output.

Advanced technology that will exceed your expectations.

A Smart Touch-Screen Helps You Get Your Work Done Fast

The new MX-M904/M1054/M1204 Monochrome Document Systems feature a 10.1" (diagonally measured) high-resolution LCD that goes beyond basic touch-screen menu navigation. With advanced features that include flick, tap, and slide, you can quickly access powerful functions. With scan preview, you can easily view and edit your job. A tilting display panel provides enhanced accessibility. A built-in retractable keyboard makes data entry quick and easy.

A High-Speed Document System That Is Also High Performance

The new MX-M904/M1054/M1204 utilize a powerful multi-processor controller designed to quickly execute complex copy, print and scan jobs, even in busy office environments. Plus, with print speeds of 90 ppm, 105 ppm and 120 ppm, the MX-M904/M1054/M1204 can help raise your productivity to new levels.

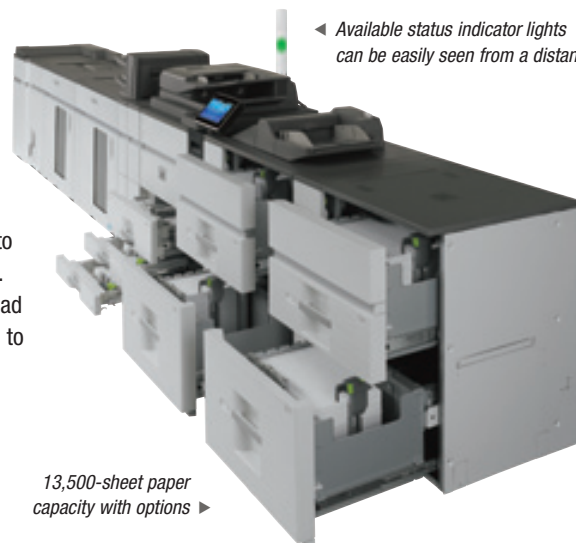
Sharp's next generation **Micro-fine Toner Technology** ensures optimum density and edge definition, while maximizing toner yield and minimizing waste. Combined with true 1200 x 1200 dpi print resolution, your business can produce professional looking documents with greater efficiency. And, to help maximize productivity, these new models utilize an intermediate toner hopper, which enables users to change toner cartridges even while the machine is running a job.



Change toner on the fly

Robust Paper Handling For Busy High-Volume Environments

Sharp understands the importance of productivity, that's why the new MX-M904/M1054/M1204 Monochrome Document Systems offer up to **13,500-sheet paper capacity** and support **media types up to 110 lb. cover (300 gsm)**. Sharp's new paper feed option uses **air-feed technology**, which maximizes reliability and minimizes down time. A feature typically found on production devices and printing presses, the triple air-feed system directs air flow with precision accuracy to ensure proper paper handling. A standard 250-sheet dual head document feeder can scan up to 200 images per minute.



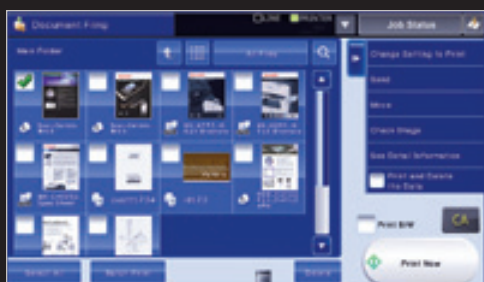
◀ Available status indicator lights can be easily seen from a distance

13,500-sheet paper capacity with options ▶

FLEXIBLE DOCUMENT OUTPUT AND DISTRIBUTION



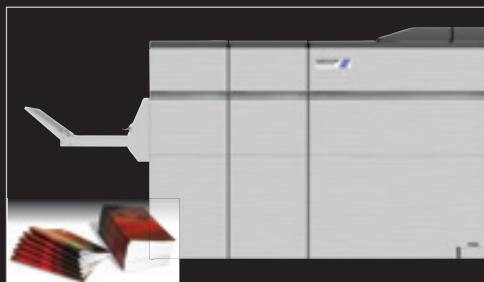
Job handling features enable you to retain print jobs on the hard drive for reprinting.



Sharp's Document Filing System with thumbnail preview makes it easy to locate and retrieve stored jobs.



Optional 5,000-sheet paper stackers with roll-out carts. These can be connected in tandem for unattended output of up to 10,000 sheets.



Plockmatic production booklet maker system can produce up to 120-page booklets with a square fold, printable spine. (Not available at time of launch).

Powerful multi-tasking controller delivers true 1200 x 1200 dpi.

Exceptional Print Quality with Professional Output

With the MX-M904/M1054/M1204 Monochrome Document Systems, your business can produce high-quality B&W documents with crisp razor-sharp graphics. With true **1200 x 1200 dpi resolution**, even documents with fine detail will look great! **Standard true Adobe PostScript** with custom print drivers offer extensive job control options, so you can manage document output right from your desktop. With Sharp's **advanced job retention** features, jobs can be stored on the hard drive to be reprinted again and again by walk-up users right from the control panel.

Integrated Network Scanning

With Sharp's powerful **ImageSEND™** technology, you get one-touch distribution features that centralize document workflow, help reduce mail costs and help save time. With up to **seven destinations** – E-mail, Desktop, FTP, Network Folders (SMB), USB, Fax and Internet Fax – getting your documents where they need to go is as easy as pushing a button. With **Sharpdesk®** personal document management software, users can easily organize their scanned documents and integrate them into everyday workflow.



Sharp's Integrated Network Scanning

Innovative Job Management

Sharp's **Document Filing System** provides a 1 TB hard disk drive to store frequently used files. With the thumbnail preview mode, stored jobs can be located and retrieved quickly. Easily reprint retained jobs, combine jobs, repaginate jobs, edit pages and more. For environments with critical documents, a redundant back-up hard drive is available.

Advanced Finishing Adds the Final Touch

The MX-M904/M1054/M1204 offers a wide range of high performance finishing options that can **give your documents a professional look**.

- The MX-FN24 3,000-sheet stacking finisher with 50-sheet stapling capacity speeds through large projects, giving you complete control over deadlines. Need robust booklet making? Choose the MX-FN22 4,000-sheet **saddle stitch finisher** with **100-sheet stapling capacity**, which can produce up to **80-page saddle-stitched booklets**.
- The MX-CF11 **two-tray inserter** option enables you to insert covers and pre-printed documents into your job for producing professional booklets and other complex documents.
- Create professionally bound documents in-house with the optional **GBC SmartPunch Pro™**. With up to 9 punch styles, your business can produce ready-to-bind documents at speeds up to 120 ppm. (Not available at time of launch).
- To give your booklets a professional finished edge, the MX-TM10 **trimmer unit** option can cut the folded open edge of your documents for a smooth, straight, finished look.
- The MX-FD10 **multi-folding unit** option provides a variety of folds, including Z-fold, C-fold, Accordion-fold, Double-fold and Half-fold — your documents will look so good, everyone will think your jobs are sent out to a printer.

MX-FN22 saddle stitch finisher





INTUITIVE USER INTERFACE ON 10.1-INCH COLOR LCD*



Sharp's tilt screen allows for adjustment to a convenient viewing position.

Navigate Smoothly Through Advanced MFP Functions

Sharp's new high-resolution touch-screen display offers the customization and ease-of-use your business needs to elevate your office productivity to the next level. With the ability to change background screens, the layout and naming of the function keys, language display setting and more, you can quickly set up a custom user interface that meets the needs of your office. Whether your requirements are simple or complex, the MX-M904/M1054/M1204 Monochrome Document Systems can help you get the job done fast!

For a College Campus Office: Set up a simple screen for walk-up faculty and administrators to retrieve courseware or initiate large print runs with ease.



Change the Theme: Easily change the menu colors and icon layout to suit the preferences of users in your office.



Change the Language: Walk-up users can easily choose from 24 different display languages.



*10.1" (diagonally measured) high-resolution LCD.



CONFIGURATIONS TO SUIT VIRTUALLY ANY ENVIRONMENT

Versatile and Customizable To Fit Your Needs

The MX-M904/M1054/M1204 Monochrome Document Systems offer flexible paper handling and finishing options to accommodate everything from basic multi-function office use to advanced document output for small CRD environments and copy rooms.¹



MX-M1204 shown with 3,500-sheet large capacity cassette, 50-sheet Staple/Saddle Finisher and 100-sheet bypass tray.



MX-M1204 shown in full configuration with Curl Correction Unit, Inserter, Multi-Folding Unit, 100-sheet Staple/Saddle Stitch Finisher, dual 5,000-sheet large capacity trays, dual 5,000-sheet paper stackers, 500-sheet multi-bypass tray and status indicator.

Modular Options Make It Easy To Build the System of Your Choice

Options for the MX-M904/M1054/M1204 enable businesses to choose from four high performance finishers that offer up to 100-sheet stapling, 80-page saddle stitch booklet making and available three-hole punching. More advanced configurations include a two-tray inserter, multi-folding unit and trimmer unit.

FLEXIBILITY



Multi-Folding Unit



Two-Tray Inserter



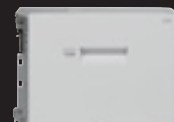
MX-M904/M1054/M1204 Base Machine



100-Sheet Multi-Bypass



3,500-Sheet Letter LCC



3,000-Sheet Ledger LCC



Plockmatic 120-page Production Booklet Maker²



100-Sheet Staple Saddle Finisher



100-Sheet Staple Stacking Finisher



50-Sheet Staple Saddle Finisher



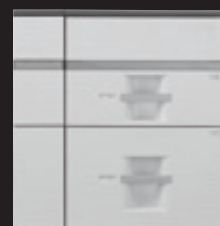
50-Sheet Staple Stacking Finisher



GBC Smart Punch Pro^{TM 2}



5,000-Sheet Paper Stacker



5,000-Sheet LCT Air-Feed



500-Sheet Multi-Bypass

¹ Some options not available in all configurations. See your local dealer.

² Not available at time of launch.



GET MORE OUT OF NETWORK RESOURCES



Sharp OSA® technology at a glance

- Automate tasks and save time with seamless integration with network applications and cloud-enabled services.
- Virtually eliminates repetitive tasks and streamlines workflow, increasing efficiency.
- Maximize your return on investment with tighter integration among IT assets.
- Industry-standard programming leads to faster deployment of new solutions.



Sharp OSA technology allows businesses to leverage the power of their network applications, back-end systems, even cloud-enabled services.

Streamline your document workflow and enhance your productivity with Sharp OSA® technology.

Integrating With Network Applications And Cloud Services Has Never Been So Easy

The MX-M904/M1054/M1204 Monochrome Document Systems offer **powerful document workflow capabilities** to help businesses leverage their network infrastructure, cloud-enabled services and more!* While others are limited to a small circle of productivity, the Sharp OSA development platform allows businesses to leverage the power of their network applications, back-end systems, even cloud-enabled services, right from the touch-screen panel of the MX-M904/M1054/M1204 Monochrome Document Systems.

Save Time, Increase Efficiency

You'll save time and increase the efficiency of everyday tasks with Sharp OSA technology because it can be virtually seamless to the user. Any MX-M904/M1054/M1204 anywhere in the organization can access network resources that were once only available on a desktop PC. With **one-touch access** to business applications via Sharp OSA integration, you can start and finish a document distribution task without worry.

Customized Integration

Sharp OSA technology also provides **powerful customization**. With the ability to personalize applications to deliver document processes tailored to your business, Sharp OSA technology can reduce redundancy and **streamline workflow**, helping to save time and **optimize productivity**. The latest version of Sharp OSA technology can reach beyond the firewall, connecting with cloud-based applications over the Internet. And since Sharp OSA technology utilizes industry-standard network protocols and Web API's, third-party software developers can deliver customized solutions to your business faster than ever.

The Convenience You Want With The Security You Need

The MX-M904/M1054/M1204 combined with the Sharp OSA development platform is the logical choice for providing fast, **flexible access to documents and applications**...no matter where you are in the office. You also get the controlled access and tracking ability you require with tighter integration capabilities for network security and accounting applications.

*Some features require optional equipment.

ADVANCED DEVICE MANAGEMENT TOOLS MAXIMIZE EFFICIENCY



Sharp Remote Device Manager



Remote Front Panel



Integrated web browser application enables easy website access.

The MX-M904/M1054/M1204 Production Monochrome Document Systems enhance operational efficiency through versatile device management capabilities.

Sharp Remote Device Manager (SRDM)

Make management of your MX-M904/M1054/M1204 simple and straightforward with Sharp Remote Device Manager (SRDM).^{*} This easy-to-use software allows you to take control of the versatile system features and simplifies installation and management.

- With Sharp Remote Device Manager, administrators can easily manage the setup, configuration, device settings, cloning and more! Advanced features such as **Remote Front Panel** allow administrators and support personnel to view and control the LCD panel of the machine remotely from virtually any PC on the network!
- Event-driven, real-time service alerts, administrators and supervisors can achieve higher productivity. Now it is easier than ever to view service logs, click counts, history reports and more.

With **Printer Status Monitor**, network users can view printer conditions, check paper levels, toner, and more, all through an easy-to-use interface.

Take Charge of Usage and Costs

With Sharp's device management system, administrators and supervisors can **define user groups** on the MX-M904/M1054/M1204 to manage and restrict features, such as copying, scanning or printing. Easily set up a custom user group to manage page counts (copy, print, scan or fax operations). This helps to simplify cost management of document imaging. The MX-M904/M1054/M1204 can store profiles for up to 1,000 users.

Integrated Web Browser Application

The MX-M904/M1054/M1204 provides a standard integrated **web browser** application right at the panel of the machine, enabling easy access to web-based resources, navigation and printing.

24/7 On-Line Training With My Sharp™

Managing all of the advanced features of your Sharp product is simple and easy. Ask your Authorized Sharp Dealer about the **My Sharp** website. This dedicated customer training website is customized to your MX-M904/M1054/M1204 and allows you to locate resources and find information specific to your configuration, truly helping you maximize your investment.



SHARP

^{*}Some features not available at time of launch.

HEIGHTENED SECURITY SAFEGUARDS YOUR INTELLECTUAL PROPERTY

PRIVACY

AUTHORIZATION

CONFIDENTIALITY

PROTECTION



Sharp's Standard Key Security Features at a Glance

- 256-Bit Data Encryption
- Up to 7 times Data Overwrite Protection
- Group Account Management for up to 1,000 Users
- Confidential Printing
- Port Management
- IP/MAC Address Filtering
- End-of-Lease Feature

Innovative document and device protection helps ensure confidentiality.

To help protect your data, the MX-M904/M1054/M1204 offers several layers of **Standard Security**, making Sharp the optimum choice to help protect employees' privacy and intellectual property. As a leader in office equipment security, Sharp makes it easy for virtually any business or government entity to safely deploy digital copying, printing, scanning and faxing.



Authority Groups

Advanced **Account Management** enables administrators to set authority groups for access to features of the MX-M904/M1054/M1204. Administrators can control which department, for instance, has full access to copying, printing, scanning and/or fax. Walk-up users enter a code, Local Name and Password, or LDAP User Authentication to access the features assigned to their group.



Data Encryption and Overwrite

To help protect your data, the MX-M904/M1054/M1204 can encrypt document data using AES (Advanced Encryption Standard) **256-bit encryption**. The MX-M904/M1054/M1204 can also erase the temporary memory on the hard drive by overwriting the encrypted data up to seven times. At trade-in time, a convenient **End-of-Lease feature** overwrites all data, including the Document Filing area, user data, job status data and address book.



Network Scanning Access Control

To help protect your network from unauthorized e-mail communications, the MX-M904/M1054/M1204 supports **User Authentication**, requiring users to login before performing any network scanning operations.



Control Device Access Over the Network

To help restrict access to the device over the network, the MX-M904/M1054/M1204 offers IPsec, SMB and extended support for **SSL Encryption** (Secure Sockets Layer), **IP/MAC** address filtering, IEEE 802.1x authentication, protocol enable/disable and port management for maximum security.



Documents Remain Confidential

The MX-M904/M1054/M1204 offers **Confidential Printing**, which when used, requires users to enter a PIN code in order to print a queued document. To help protect your direct-print documents from unauthorized viewing, the MX-M904/M1054/M1204 offers encrypted PDF printing and scanning. Additionally, **Secure Fax Release** ensures received fax documents are held in memory until an authorized user enters a PIN code, so that compliance with healthcare regulations such as HIPAA is easier.



Tracking and Auditing Information

Legislation and industry policies require companies to be more aware of information flow from their offices. Sharp offers both built-in and additional hardware/software which allows users to **control, access and track usage** of each device on the network.



Data Security Kit (Optional)

For maximum protection, the optional data security kit offers additional features, such as **Data Overwrite on-demand** and at power up, Document Filing access control, **Incorrect Password Lockout** and Restricted Status Display and Restricted List printing.

These scalable security offerings aim to protect your intellectual property, preserve confidential information and help your business to meet regulatory requirements, such as the Health Insurance Portability and Accountability Act (HIPAA) and the Gramm-Leach-Bliley Act (GLB). For additional information visit: www.sharppusa.com/security.





COMMITTED TO HELPING PROTECT THE ENVIRONMENT



Advanced Energy Saving Features

The MX-M904/M1054/M1204 utilizes several energy efficient technologies to minimize power consumption and maximize energy savings.

- An LED exposure lamp reduces power significantly when compared to conventional exposure lamps.
- A customizable seven-day power management scheduler allows businesses to define the days and times when power will be turned on and turned off.
- Sharp's Auto Power Management function allows the device to be set to shut off automatically based on usage trends.
- Sharp's Eco-Scan mode can shut off the fuser when scanning documents, previewing images, faxing and other operations.

Sharp's Environmental Initiatives and dedication to developing energy efficient document systems set a high standard for the industry.

An Environmentally Responsible Approach to Product Design

The MX-M904/M1054/M1204 Monochrome Document Systems utilize Sharp's advanced **micro-fine toner technology**, which offers a lower consumption rate and produces less waste than conventional toners, resulting in longer replacement intervals. Sharp supplies are packaged using fully **recyclable materials**. Long-life consumable parts help minimize service intervals and down time, resulting in lower operating costs. With two different energy saving modes, power can be reduced or shut off at set intervals. All Sharp document systems are **ENERGY STAR® certified** and **RoHS compliant** to restrict the use of hazardous substances.

Toner Recycling Program

As part of our commitment to helping preserve the environment, Sharp offers our customers zero waste land fill recycling for all Sharp consumables, including cartridges, bottles, toner collection containers and drum units. Sharp encourages customers to recycle their used Sharp toner cartridges in bulk by providing a pre-paid Recycling Kit for their return to our facility.

Environmental Leadership

As a testament to our commitment to the environment, Sharp is a three-time winner of the **ENERGY STAR®** annual **Excellence in Energy Proficiency Product Design**. Sharp is also a four-time winner of the **SmartWaysm Excellence Award**, which recognizes companies for conserving energy and lowering greenhouse gas emissions in logistics and transportation. Sharp was also a previous recipient of the **Excellence in Partnership Green Contractor Award** and the **Evergreen Award** from the General Services Administration (GSA) and the Coalition for Government Procurement. These awards recognize environmentally responsible businesses and their efforts on recycling, waste reduction and affirmative procurement practices.

Global Initiatives

Sharp is committed to environmental sustainability and corporate responsibility including planning, design, manufacturing, distribution and product end-of-life management. For more information about Sharp's environmental leadership including information about energy efficient products, electronics or toner cartridge recycling, please visit www.sharppusa.com/environment.

MX-M904/M1054/M1204 SPECIFICATIONS

Main Specifications

MX-M904/ M1054/M1204	Base models include LCD, 250-sheet DSPF, 3,000-sheet paper capacity (two tandem 2,000-sheet trays/two 500 sheet trays), 1-TB hard disk drive, PCL6/Adobe® PostScript® 3™ network printing, color network scanning, web browser, retractable keyboard and MX-AMX2 application communication module		
Type	Console, Monochrome multi-function digital document system		
Display	10.1" (diagonally measured) color dot matrix high-resolution touch panel tilting display. 1024 x 600 dots (W-SVGA)		
Functions	Copy, print, network print, network scan, document filing and fax ¹		
Copy System	Dry electrostatic transfer/Dual component developer/Magnetic brush development/OPC/white LED exposure/heat roller fusing		
Originals	Sheets and bound documents		
Max Original Size	11" x 17"		
Copy Size	Min. 5½" x 8½", Max. 11" x 17" + 12" x 18"		
Copy Speed	90/105/120 ppm (8½" x 11")		
Multiple Copy	Max. 9999 copies		
First Copy Time (in Seconds) ²	MX-M904	MX-M1054	MX-M1204
	Platen Glass	4.0	3.2
	DSPF	6.3	5.5
Warm Up Time	210 seconds ²		
Magnification	25% to 400% in 1% increments (with document feeder 25%-200%)		
Original Feed	250-sheet DSPF		
Scan Speed	DSPF Scan: Up to 200 IPM ² (Monochrome or Color)		
Original Sizes	5½" x 8½", 8½" x 11", 8½" x 11" R, 8½" x 14", 11" x 17"		
Paper Capacity	Std. 3,000 Sheets/Max. 13,500 Sheets		
Paper Feed	Standard: Tandem Tray 1 - 1200 sheets (letter size), Tandem Tray 2 - 800 sheets (letter size), Trays 3/4 - 500 sheets ea. (letter/legal/ledger/statement/12" x 18"). Optional: Multi-bypass Tray (for machine) - 100 sheets (letter/legal/ ledger/statement/ 12" x 18"), Multi-bypass (for LCT) - 500 sheets (letter/legal/ ledger/ statement/12" x 18"), LCT (2-Drawer) - 2,500-sheets each drawer (letter/legal/ledger/12" x 18"), Letter LCC - 3,500 sheets (letter), Ledger LCC (MX-M904 only): 3,000 sheets (letter/legal/ledger).		
Paper Weights and Types	Tandem Trays - 16-28 lb. bond, Trays 3/4 - 16 lb. bond to 100 lb. bristol, Multi-bypass Tray (for machine) - 15 lb. bond to 110 lb. cover, Multi-bypass Tray (for LCT) - 15 lb. bond to 100 lb. bristol, LCT (2-drawer) - 15 lb. bond to 110 lb. cover, Letter LCC/Ledger LCC - 16 lb. bond to 100 bristol. Supported paper types include thin, plain, recycled, color, letter head, pre-printed and pre-punched, embossed and glossy.		
Duplexing	Standard automatic duplex copying and printing		
CPU	Up to 1.8 GHz Multi-Processor Controller		
Interface	RJ-45 Ethernet (10/100/1,000 Base-T), USB 2.0 (2 host ports, front and rear), USB 2.0 (1 device port)		
Memory	Standard 5 GB		
Hard Disk Drive	1 TB		
Copy Resolution	Scan: 1200 x 1200 dpi / 600 x 600 dpi		
Copy Modes	Monochrome/Grayscale		
Exposure Control	Modes: Text, Text/Printed-Photo, Printed-Photo, Text Photo, Photo, Map, Pale-Color. Settings: Auto or 9 step manual		
Halftone	256 gradations/2 levels (monochrome)		
Copy Features	Electronic sort, Auto Paper Selection (APS), Auto Magnification Selection (AMS), image preview/edit, auto tray, paper type selection switching, rotate copy, reserve copy, tandem copy, book copy, margin shift, edge/center erase, book divide, dual page, cover/ insert page, OHP insert, job build, card shot, blank page skip, mirror/B/W reverse, proof, pamphlet, watermark, custom image, job programs.		
Account Control	Up to 1,000 users. Supports user-number authentication (on device), login name/password or login name/password (via LDAP server) for Copy, Print, Scan, Fax and document management.		
Output Tray Capacity	Main output tray (top) 250 sheets (face down)		
Firmware	Flash ROM with local (USB), network update capability and firmware update 1 to N with SRDM (Sharp Remote Device Management)		
Configuration	Web-based management with user/administrator level login, cloning (1 to N) with SRDM and remote front panel access		
Method			
Service/Functions	Remote front panel, remote access to service logs and click counts		
Accessibility	Tilt Front Panel, Adjustment of Key Touch, Document Feeder Free Stop, Job Programs, Remote Front Panel, Universal Grip for Paper Trays, and Disable Screen Timeout		
Features			
Environmental	International Energy Star Program Ver. 1.2, Law on Promoting Green		
Standards	Purchasing. European RoHS (Restriction of Hazardous Substances)		
Power Source	AC 208-240 VAC, 60 HZ, 15 Amps		
Power Consumption	Maximum: 3.5 kW or less		
Weight	Approx. 1081 lbs.		
Approx. Dimensions	42¾" (w) x 31¼" (d) x 48¾" (h)		

Network Printing System (Standard)

PDL	PCL® 6 compatible, True Adobe®, PostScript® 3™, optional XPS
Resolution	1200 x 1200 dpi
Print Speed	90/105/120 pages per minute (8½" x 11")
Print Drivers	Windows Server® 2003-2008, Windows XP, Windows XP x64, Windows Server 2003-2008 x64, Windows Vista®, Windows Vista® x64, Windows 7, Windows 7 x64, MAC OSX (including 10.4.11, 10.5-10.5.8, 10.6.5-10.6.8, 10.7-10.7.2), all MAC PPD.
Features	Auto configuration, continuous printing, electronic sorting, N-up printing, duplex printing, transparency inserts, margin shift, image rotation, different cover page, poster print, job bypass print, job retention, confidential print, proof print, user authentication, image stamp and watermarks. Additional features: Multiple pamphlet print, network tandem print, carbon copy print mode, different cover page/last page/other page, form overlay, tab paper settings, tab printing, chapter inserts and page Interleave ¹
Direct Printing	File Types: TIFF, JPEG, PCL, PRN, TXT, PDF, Encrypted PDF, Compressed PDF/A1, PostScript and Windows XPS ¹ . Methods: FTP, Web page, E-mail, Network Folder and USB
Resident Fonts	80 outline fonts (PCL), 136 fonts (PS)
Interface	RJ-45 Ethernet 10/100/1,000 Base-T, USB 2.0
Operating Systems	Windows Server 2003-2008, Windows XP, Windows Vista, Windows 7, MAC OS 9-9.2.2, MAC OSX 10.2.8, 10.3.9, 10.4.11, 10.5-10.5.8, 10.6-10.6.5, Novell® Netware® 3x, 4x, 5x, Sun® OS 4.1x, Solaris® 2x, Unix®, Linux® and Citrix® (Metaframe, Presentation Server 4, 4.5) and Windows Terminal Services. ¹
Network Protocols	TCP/IP (IPv4, IPv6, IPSEC) SSL (HTTP, IPP, FTP), SNMPv3, SMTP, POP3, LDAP, 802.1x for Windows and Unix. LPD and LPR for Unix. IPX/SPX® for Novell environments and EtherTalk®, AppleTalk® for Macintosh® environments. ¹
Printing Protocols	LPR, IPP, IPPS, PAPER, Raw TCP (port 9100), FTP and Novell Pserver/Rprinter
Network Security	IP/MAC address filtering, protocol filtering, port management, user authentication and document administration. ¹
Security Standards	IEEE-2600TM-2008, DoD (NSTISSP) #11, DoD Directive 8500.2, DoD (DISA)

Network Scanning System (Standard)

Scan Modes	Standard: Color, monochrome, grayscale
Max. Original Size	11" x 17"
Optical Resolution	600 dpi
Output Modes	600 dpi, 400 dpi, 300 dpi, 200 dpi, 150 dpi, 100 dpi
Image Formats	Monochrome: TIFF, PDF, Encrypted PDF, XPS, PDF/A Color/Grayscale: Color TIFF, JPEG, PDF, Encrypted PDF ¹ , PDF/A ¹ , Compressed PDF ¹ , XPS ¹ , Internet Fax: TIFF-FX, TIFF-F, TIFF-S ¹
Image Compression	Monochrome Scanning: Uncompressed, G3 (MH), G4 (MR/MMR) Color/Grayscale: JPEG (high, middle, low) Internet Fax mode: MH/MMR (option)
Scan Destinations	E-mail, Desktop, FTP, Folder, (SMB), USB, Internet fax (option);
One-touch Dest.	Super G3 fax (option). Up to 2,000 (combined scan destinations)
Group Destinations	Up to 500
Programs	48 (combined)
Max. Jobs	Up to 100
Network Protocols	TCP/IP and SSL (includes HTTP, SMTP, LDAP, FTP, POP3), SMB, ESMTP and 802.1x.
Network Security	E-mail server user authentication for LDAP and Active Directory
Software	Sharpdesk® desktop personal document management software (1 user license included)
Sharp OSA Platform	Application Communication Module (MX-AMX2) standard

Insertor (MX-CF11 Option)

Type	Standing, 2 Trays
Paper Capacity	Upper Tray: 200 Sheets; Lower Tray: 200 Sheets (20 lb. bond)
Paper Weight	16 lb. bond to 100 lb. Bristol (Paper feeding)
Paper Size	Up to 12" x 18"
Power Consumption	70 W or Less
Power Source	24 Volts (Supplied by Main Unit)
Dimensions	21½" (w) x 30" (d) x 50½" (h)
Weight Approx.	51 lbs.

Multi-Folding Unit (MX-FD10 Option)

Type	Floor Standing
Dimensions	13½" (w) x 30½" (d) x 41½" (h)
Weight	Approx. 146 lbs.
Power Source	Powered by MX-FN21/FN22 Finisher
Power Consumption	Maximum: Standby: 23 W or less; In Operation: 150 W or less
Folding Mode	Z-fold, C-fold, Accordion-fold, Double-fold and Half-fold

4K 100-Sheet Stapler/Finisher (MX-FN21: option)

Type	4,000-sheet console stapler finisher (100-sheet stapling)
Output Trays	Upper tray: Moving offset tray (up to 1,500 letter size sheets) Middle tray: 250 sheets (letter size, non-stapled) Lower tray: Moving offset tray (up to 2,500 letter size sheets)
Stapling Capacity	Up to 100 sheets (letter/statement)
Stapling Media	Plain paper, letter/legal/ledger size or mixed
Stapling Positions	1 front, 1 rear, or 2 point stitching
Hole Punching	Optional three-hole punch unit MX-PN13B
Power Source	120 VAC, 60 HZ, 15 Amps
Power Consumption	200w/350w with MX-MF10
Weight	Approx.: 134.5 lbs.
Dimensions	Approx.: 30¾" (w) x 30" (d) x 41" (h) (with tray extended)

4K 100-Sheet Stapler/Saddle Stitch Finisher (MX-FN22: option)

Type	4,000-sheet console stapler finisher (100-sheet stapling)
Output Trays	Upper tray: Moving offset tray (up to 1,500 letter size sheets) Middle tray: 250 sheets (letter size, non-stapled) Lower tray: Moving offset tray (up to 2,500 letter size sheets)
Stapling Capacity	Up to 100 sheets (letter/statement)
Stapling Media	Plain paper, letter/legal/ledger size or mixed
Stapling Positions	1 front, 1 rear, or 2 point stitching
Saddle Stitch	Center stitch/center fold (2 staples) letter/legal/ledger paper sizes
Saddle Stitch	Up to 5 sheets (16-20 sheets)/10 sets (11-15 sheets per set)/15 sets
Max. Sets	(6-10 sheets per set)/25 sets (1-5 sheets per set)
Hole Punching	Optional three-hole punch unit MX-PN13B
Power Source	120 VAC, 60 HZ, 15 Amps
Power Consumption	200w/350w with MX-MF10
Weight	Approx.: 134.5 lbs.
Dimensions	Approx.: 30¾" (w) x 30" (d) x 41" (h) (with tray extended)

Optional Equipment

MX-LC12	3,500-sheet Large Capacity Cassette (letter) ¹
MX-LCX3N	3,000-sheet Large Capacity Cassette (ledger) ¹
MX-LC13	5,000-sheet Large Capacity 2-Drawer Air Feed Tray (ledger) ¹
MX-MFX1	100-sheet Multi-bypass Tray (for machine)
MX-MF11	500-sheet Multi-bypass Tray (for MX-LC13)
MX-FN24	3K Stacking 50-Sheet Staple Finisher ¹
MX-FN25	2K Stacking 50-Sheet Staple/Saddle Stitch Finisher ¹
MX-FN21	4K Stacking 100-Sheet Staple Finisher ¹
MX-FN22	4K Stacking 100-Sheet Staple/Saddle Stitch Finisher ¹
MX-ST10	5,000-Sheet Stacker (includes one paper cart)
MX-CA10	Paper Cart (additional)
MX-CF11	2-Tray Insertor Unit ¹
MX-FD10	Multi-folding Unit ¹
MX-RB16	Large capacity Tray mounting kit
MX-RB17	Large Capacity Tray tandem connecting kit
MX-RB18	Curl Correction Unit ¹
MX-RB13	Relay Unit
MX-TM10	Trimmer Unit ¹
MX-PNX4B	3-Hole Punch Unit (for MX-FN24/FN25)
MX-PN13B	3-Hole Punch Unit (for MX-FN21/FN22)
AR-SC2	Staple Cartridge (for MX-FN24/FN25)
MX-SCX3	Staple Cartridge (for MX-FN25)
MX-SCX1	Staple Cartridge (for MX-FN22)
MX-SCX2	Staple Cartridge (for MX-FN21/FN22)
MX-SL10	Status Indicator
AR-SU1	Stamp Unit (requires AR-SV1 Stamp Cartridge)
AR-SV1	Stamp Cartridge (required for AR-SU1)
MX-PF10	Bar Code Font Kit
MX-PUX1	XPS Expansion Kit
MX-EB11	Enhanced Compression Kit
MX-FX11	Fax Expansion Kit
MX-FWX1	Internet Fax Expansion Kit
MX-EB15	HDD Mirroring Expansion Kit
MX-EC50	CAC Reader (requires Data Security Kit)
MX-FR38U	Commercial Data Security Kit (not available at time of launch)
MX-AMX1	Application Integration Module
MX-AMX3	External Accounting Module

Supplies

MX-900NT	Toner Cartridge
MX-900NV	Developer
MX-850NR	Drum
MX-850HB	Waste Toner Bottle

¹ Some features require optional equipment. See your local dealer.
² Specification may vary depending on product configuration, machine settings and operating conditions.



SHARP ELECTRONICS CORPORATION
Sharp Plaza, Mahwah, NJ 07495-1163
1-800-BE-SHARP • www.sharpusa.com

Design and specifications subject to change without notice. Sharp, Sharp OSA, Sharpdesk, My Sharp, and all related trademarks are trademarks or registered trademarks of Sharp Corporation and/or its affiliated companies. Windows, Windows NT, Windows Server and Windows Vista are trademarks or registered trademarks of Microsoft Corporation. All other trademarks are the property of their respective owners.

